

A large, powerful waterfall cascades down a rocky cliff, creating a misty spray at the base. The water is white and frothy, contrasting with the dark, mossy rocks. In the foreground, there are green, needle-like plants, possibly a type of shrub or small tree, partially obscuring the bottom left of the waterfall. The overall scene is natural and serene.

# ROODEPLAAT CATCHMENT REHABILITATION STRATEGY

---

## FEASIBILITY REPORT



**TALMAR**   
Impact Investments & Development

**FIRSTRAND**  
FOUNDATION



# CONTENTS

---

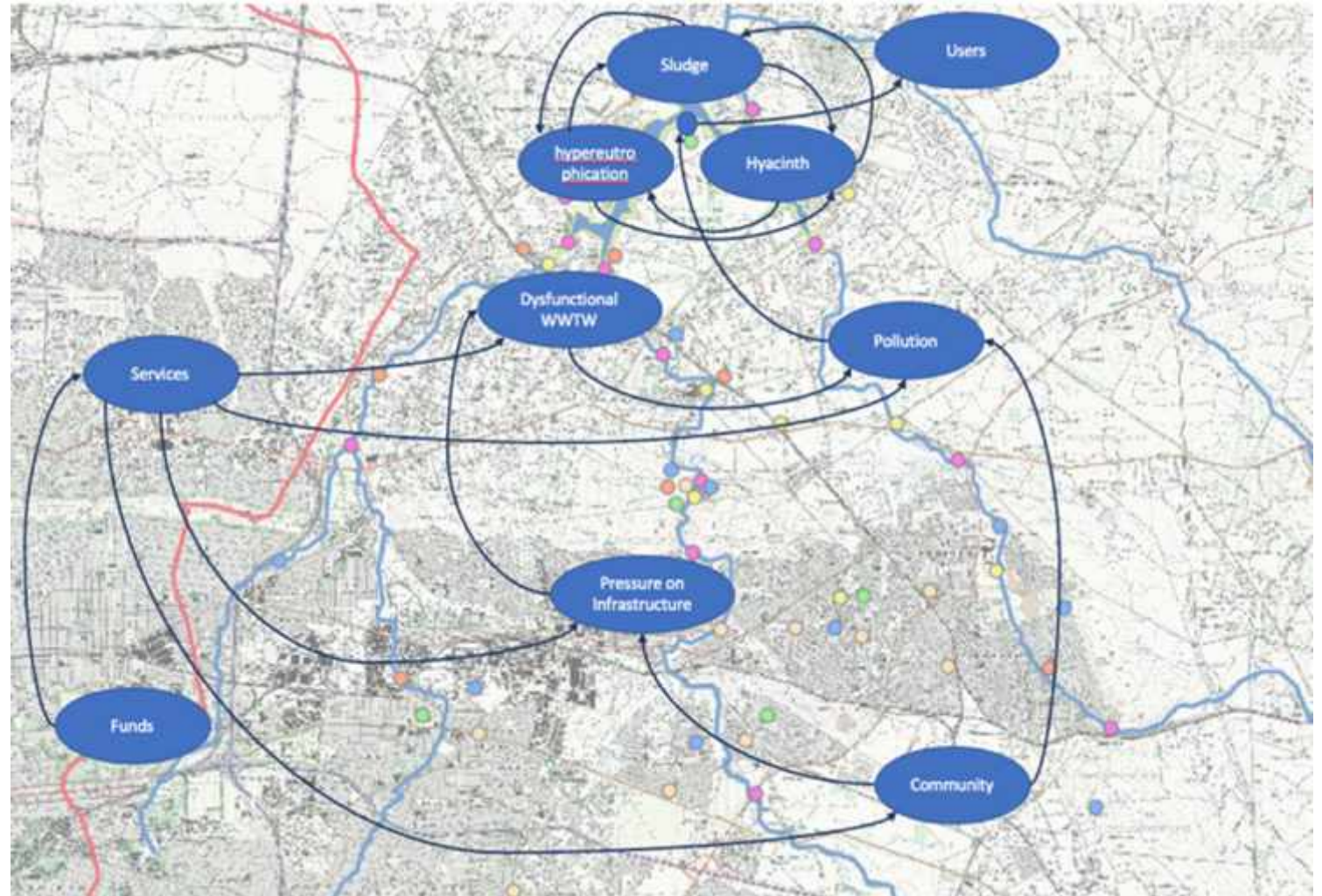
- INTRODUCTION
  - CATCHMENT MONITORING
  - AWARENESS AND PARTICIPATION
  - PHYSICAL CLEAN-UP
  - IMPROVED INFRASTRUCTURE
  - SOCIO-ECONOMIC DEVELOPMENT
  - IMPROVED ENFORCEMENT
  - THE GOLD STANDARD
  - THE WAY FORWARD
  - ACKNOWLEDGEMENTS
-



# INTRODUCTION

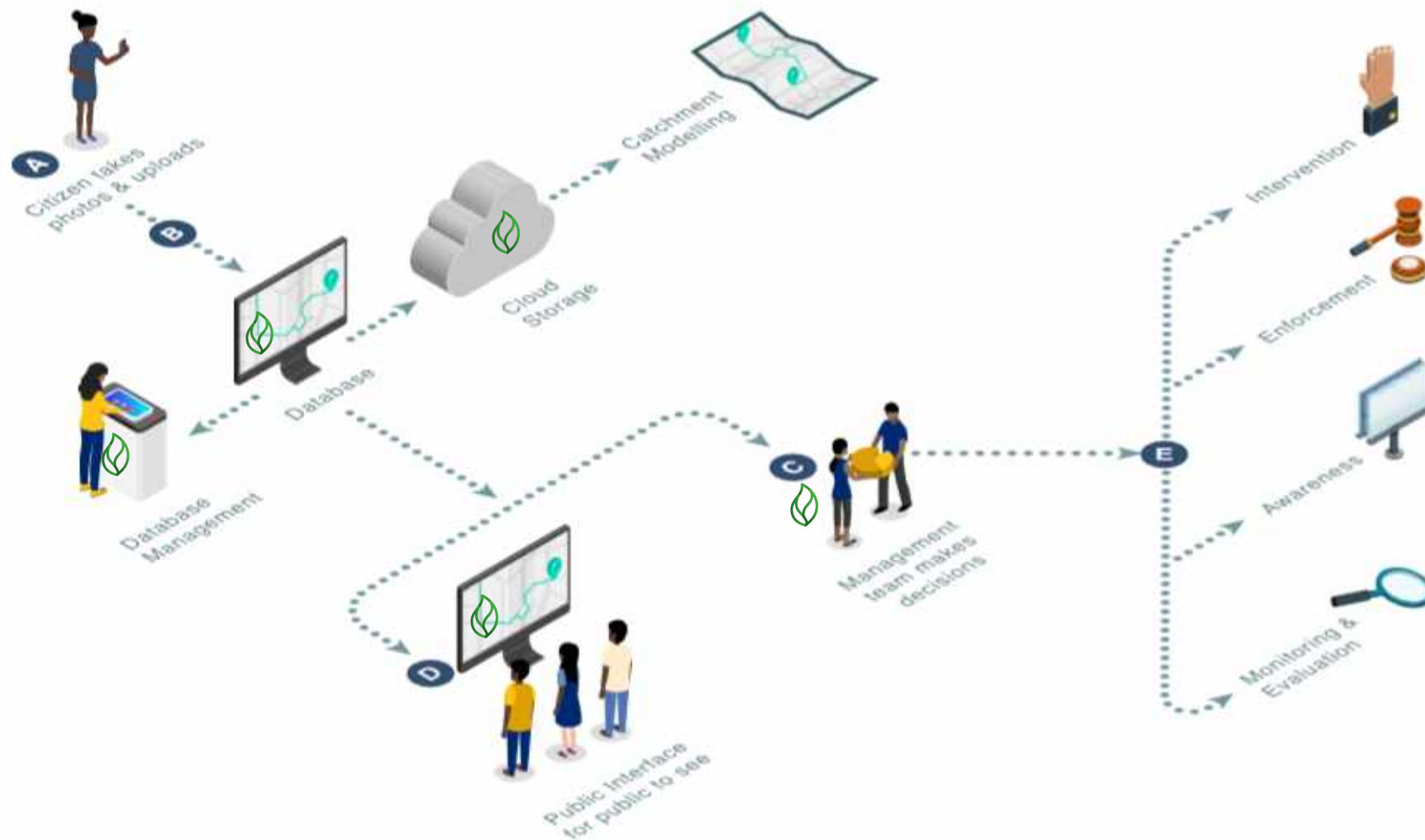
Addressing the causal loop through an integrated approach of applying six interventions.

Packaging it toward a **Gold Standard Project**.



# CATCHMENT MONITORING

GIS PORTAL: [HERE](#)





# CATCHMENT MONITORING

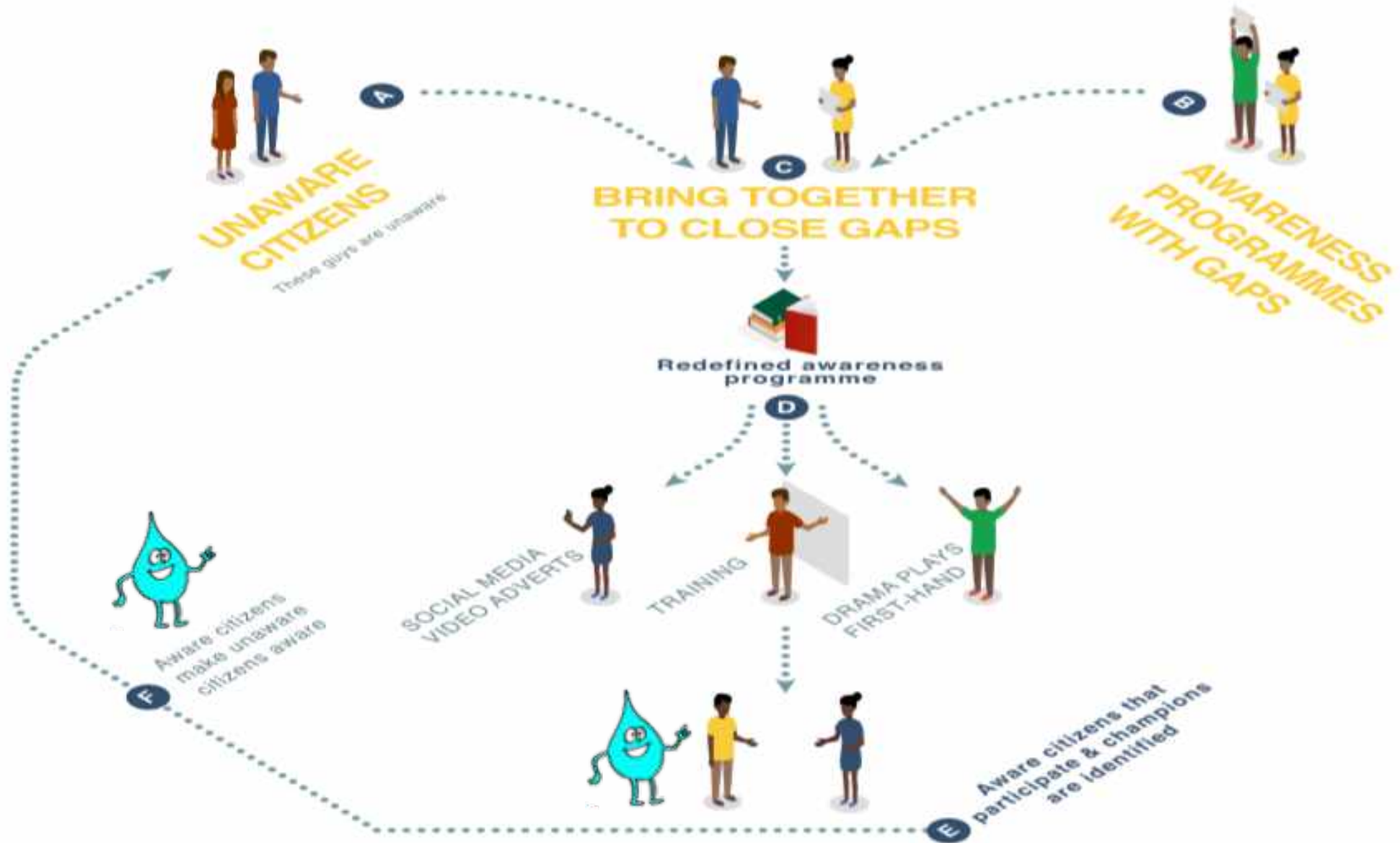
- Allows for the collection and analysis of data that can be turned into actionable insights and management decisions
- Can be viewed by management and the public alike, thereby generating public interest
- It will help maximize community engagement, communication, collaboration, and data sharing
- Will facilitate the implementation of the other intervention streams

## ***CRITICAL SUCCESS FACTOR:***

***Public sector and citizen engagement***



# AWARENESS AND PARTICIPATION



# AWARENESS AND PARTICIPATION

- Has the potential to change unconscious behavior into conscious behavior
- Citizens become increasingly aware that they can make a positive impact
- Improvement of community values

## ***CRITICAL SUCCESS FACTOR:***

***Ensuring reach. As many people as possible need to be exposed***





# PHYSICAL CLEAN-UP





# PHYSICAL CLEAN-UP

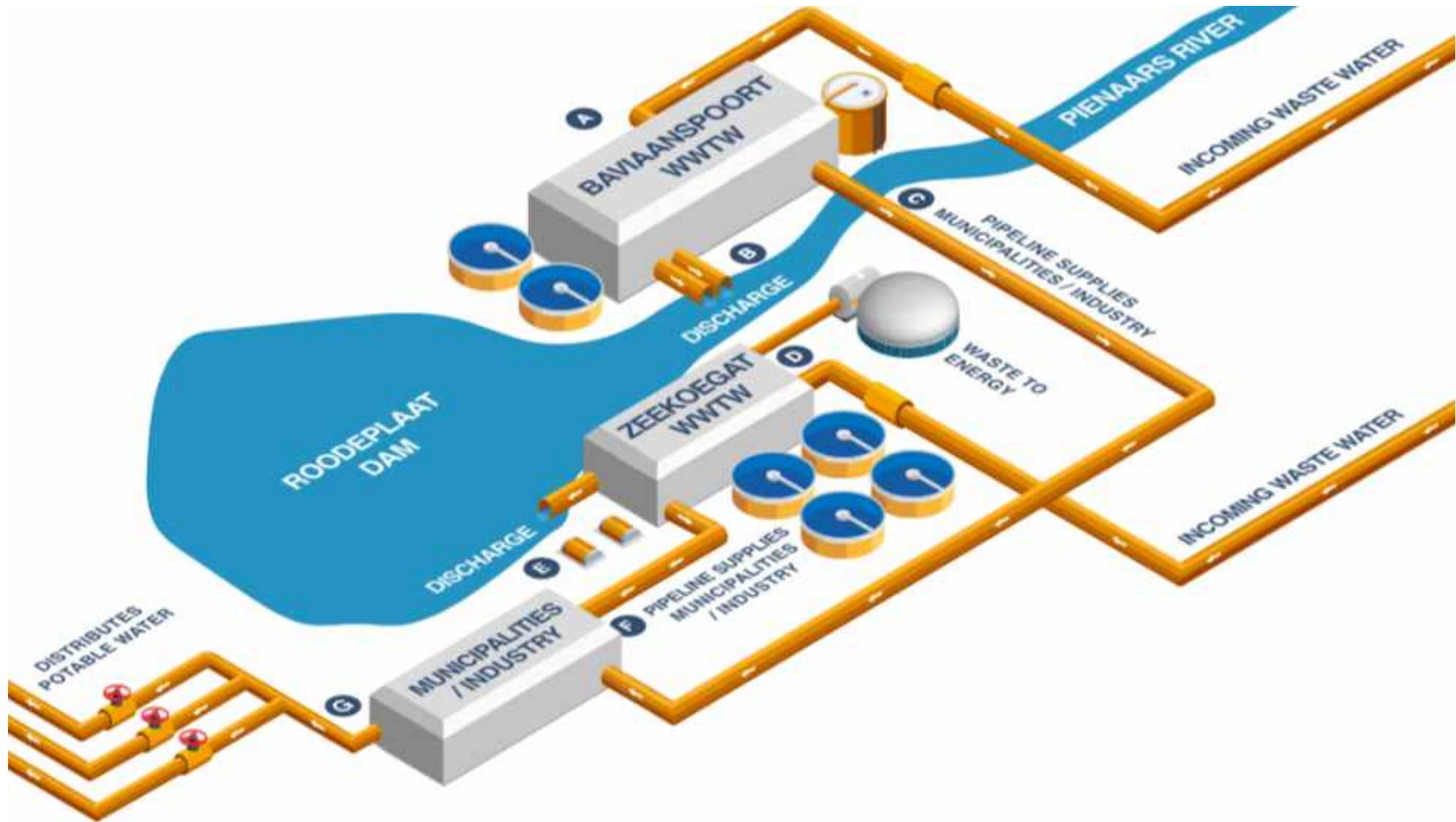
- Complements CoT waste collection, reducing costs
- Reduced waste to landfills, increasing its lifespan
- Significant job creation and skills development potential
- Return of dignity for waste pickers
- Increased citizen participation

## ***CRITICAL SUCCESS FACTOR:***

***Awareness and changed perceptions***



# IMPROVED INFRASTRUCTURE





# IMPROVED INFRASTRUCTURE

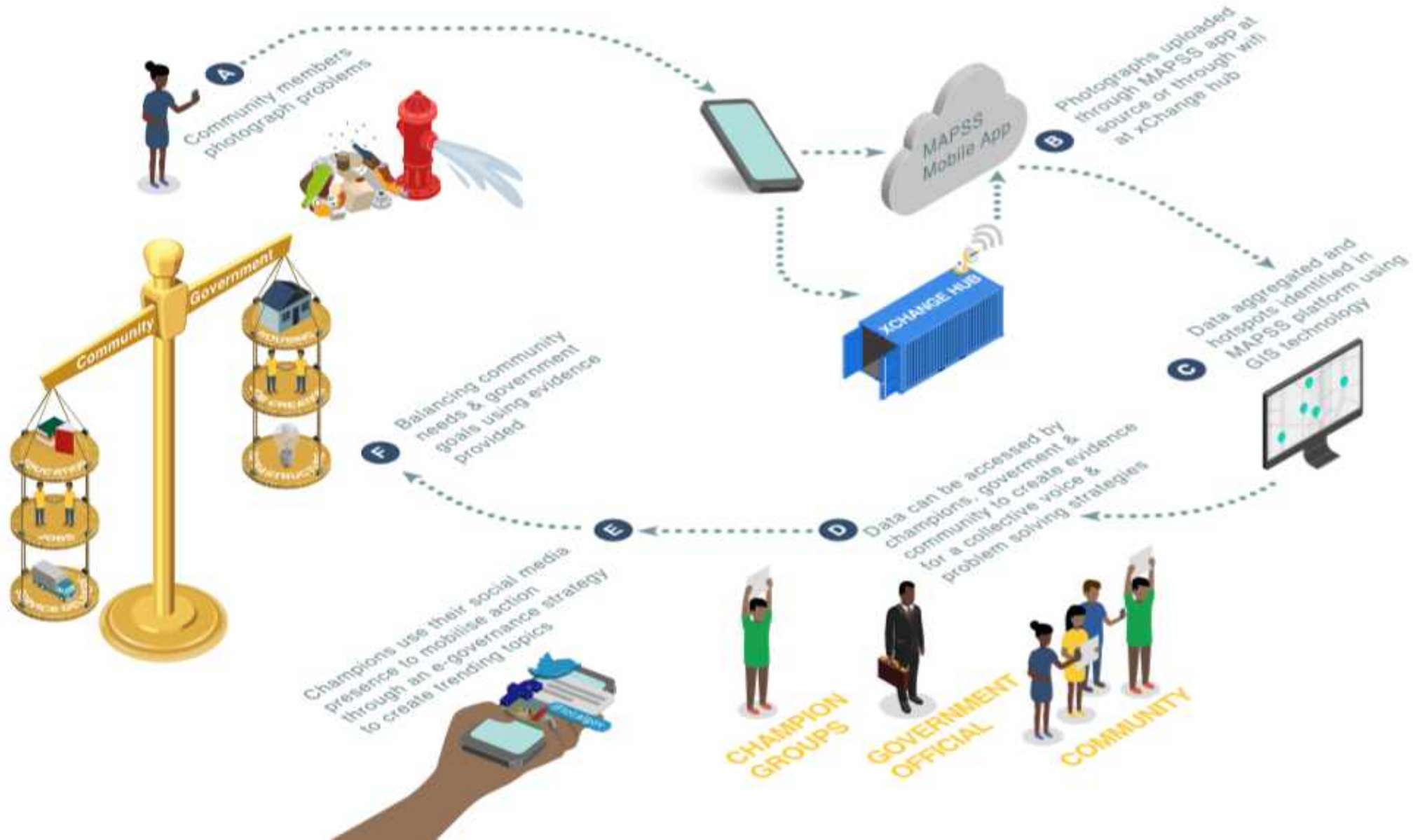
- Complements the CoT need for a water reuse strategy
- Strong need for PPPs in water infrastructure acknowledged by CoT
- Strong case for private sector investment/partnerships
- Direct impact on dam with cleaner water discharge
- Long-Term water security

## ***CRITICAL SUCCESS FACTOR:***

***Security of buyers***



# SOCIO-ECONOMIC DEVELOPMENT





# SOCIO-ECONOMIC DEVELOPMENT

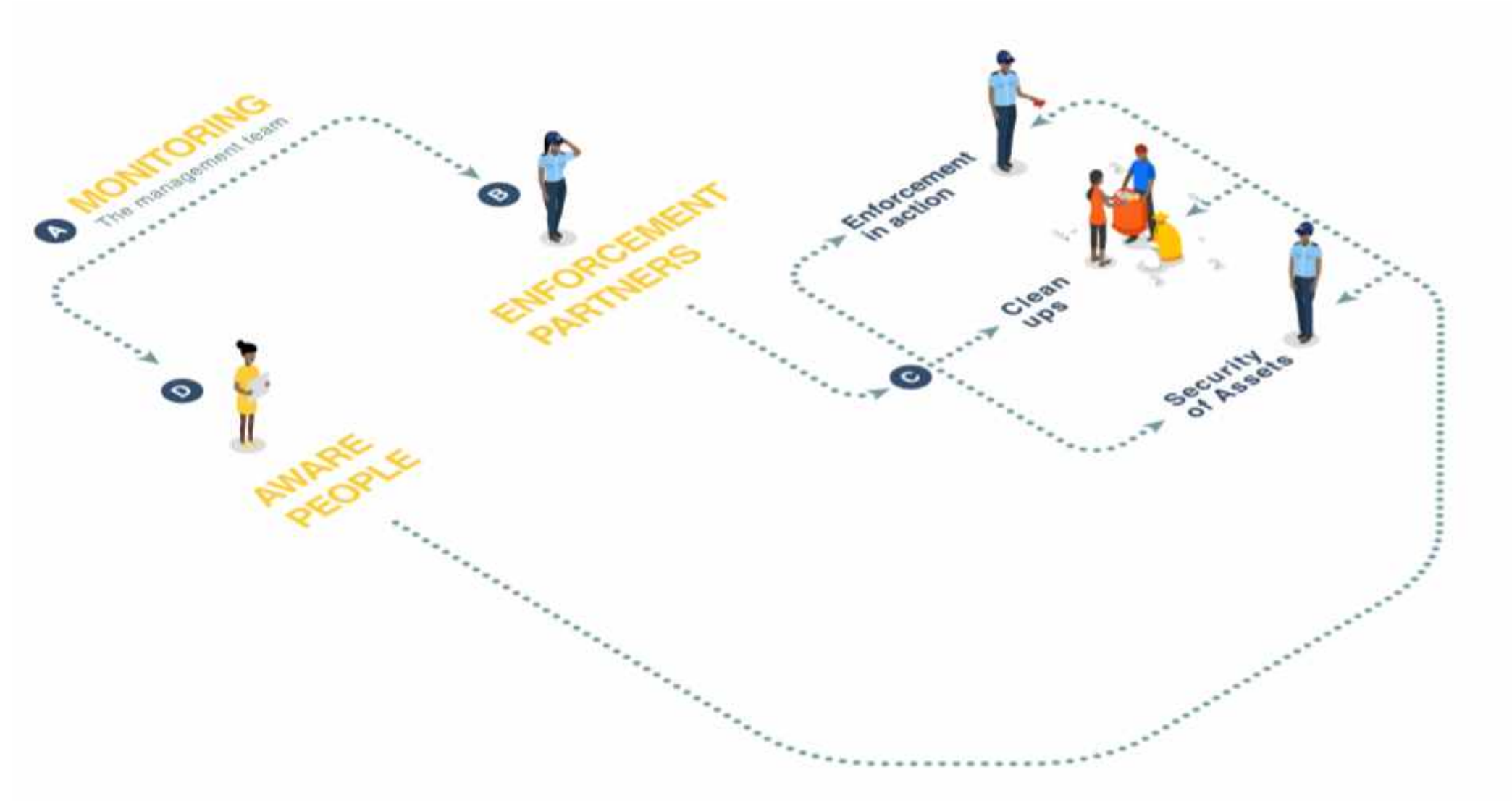
- Citizens will have aggregated evidence to back their voice
- Government has more evidence to help with decision-making and planning
- There will be a better understanding of both the community and government's perceived needs
- Problems in the community are solved more regularly through improved service delivery

## ***CRITICAL SUCCESS FACTOR:***

***Establishment of a constructive community voice***



# IMPROVED ENFORCEMENT





# IMPROVED ENFORCEMENT

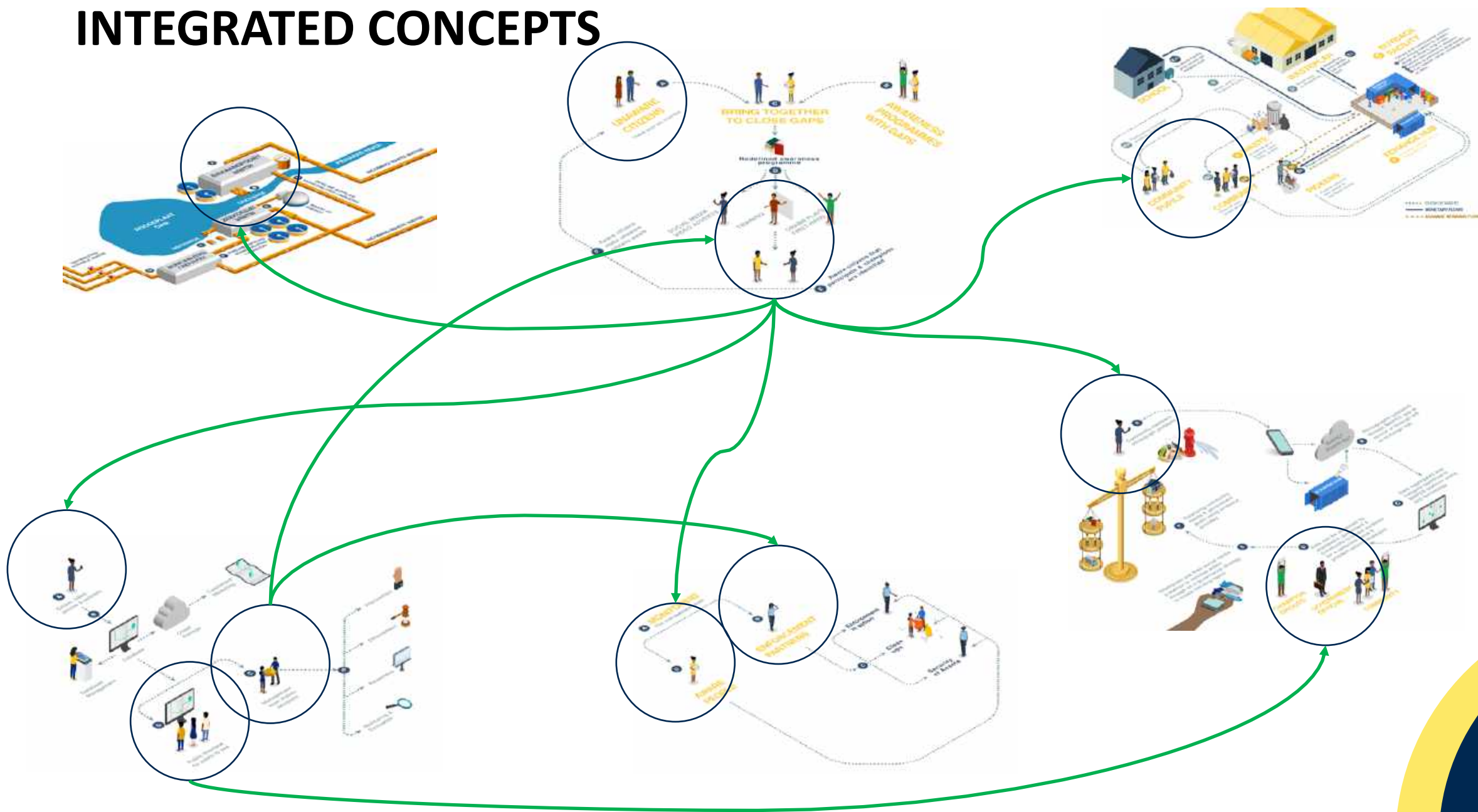
- Improved, more efficient and stronger enforcement institutions that deliver justice for all water users
- Innovative water and water infrastructure management through coordinated regulatory and enforcement efforts
- Improved response times to negative impacts

## ***CRITICAL SUCCESS FACTOR:***

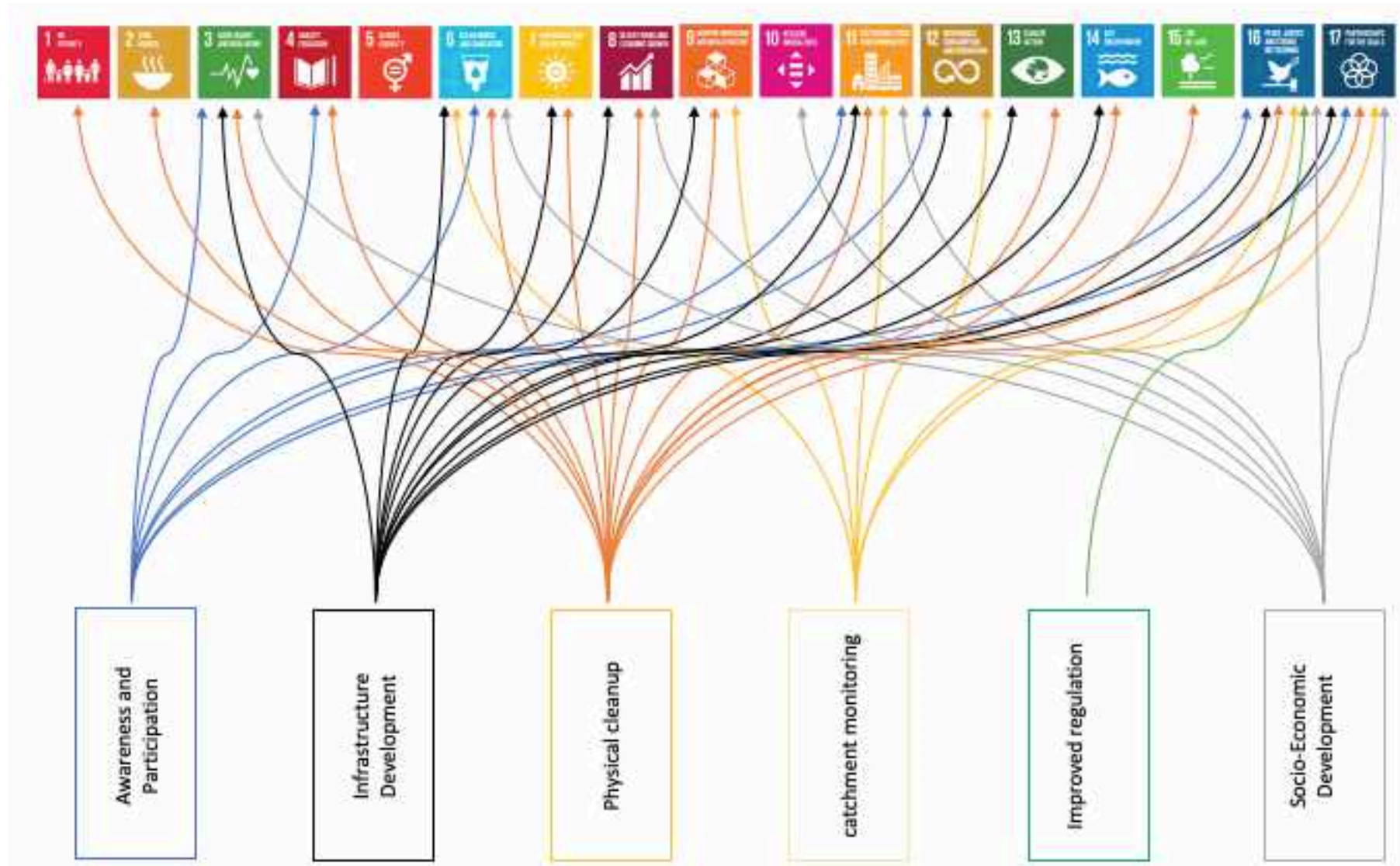
***Government support toward focused action***



# INTEGRATED CONCEPTS



# THE GOLD STANDARD





# THE GOLD STANDARD GENERAL CRITERIA



# THE GOLD STANDARD PRINCIPLES



Contributes to  
Climate Security  
and Sustainable  
Development



Safeguards nine  
Principles (see  
nine safeguarding  
principles [here](#))



Allows for  
stakeholder  
Inclusivity



Demonstrates  
real outcomes



Demonstrates  
financial  
additionality and  
ongoing financial  
need  
(demonstrates  
impacts  
additional to the  
baseline)

# THE WAY FORWARD

11/19

Maintain partnerships  
and continue co-  
development relationship

12/19

Prioritise the short,  
medium and long-term  
objectives with partners

01/20

Define the Key  
Performance Areas for  
the rehabilitation

01/20

Position the champion  
partners and allocate  
resources to execute on  
the programme

01/20

Couple inter-  
departmental/partnership  
synergies

02/20

Ensure endorsement of  
the strategy across  
partnerships

03/20

Deliver an implementable  
and fundable  
implementation plan

04/20

Next phase: strategy  
mobilisation



# ACKNOWLEDGEMENTS



ANVIL PRESS



# THANK YOU

011 780 8208

[info@talmar.co.za](mailto:info@talmar.co.za)

[www.talmar.co.za](http://www.talmar.co.za)

**TALMAR**   
Impact Investments & Development